

## Summary of Findings

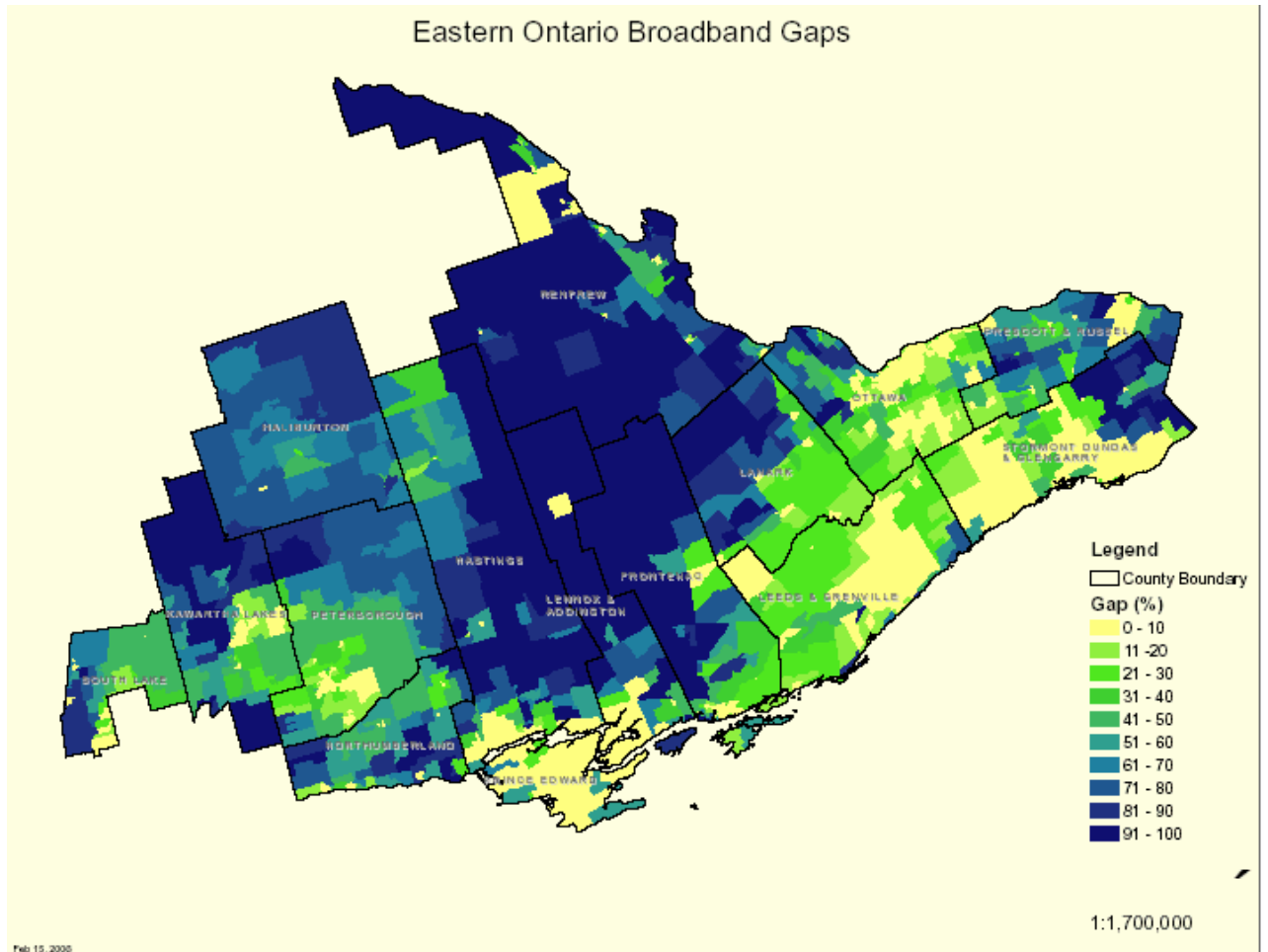
The study revealed that there are areas that remain without any level of Broadband connectivity while other areas are serviced but due to topography or distance from urban services, remain partially served. These areas are classed as under-served and their location and the number of affected dwellings have been measured by the GIS system.

## Locations of Un-Serviced Areas and Under-Serviced Areas

The study area approximates **48,792.43** square kilometers. Of that, **32,062.07** square kilometers (or 65%) remains un- serviced or under-serviced.

## Number of Dwellings in Un-Serviced Areas

The GIS system calculated a total of **829,138** dwellings within the study area of which **206,780** or **24%** are without available Broadband connectivity.



This map is representative of the coverage data available throughout Eastern Ontario and is part of a series of pictorial representations that are available for the region.